



**REGEN Medical
RST**

ReGen ShapeTech (RST)

The most powerful and cost effective body shaping and muscle stimulating technology on the market today.

**Reverse GLP-1
induced Sarcopenia**

SALES & SERVICE

ReGen Medical LLC
2300 West Sahara Ave. STE. 800
Las Vegas NV89102
702.856.4459
<https://regenmedical.com>
michaelgordon@regenmedical.com



**WOMEN
OWNED**



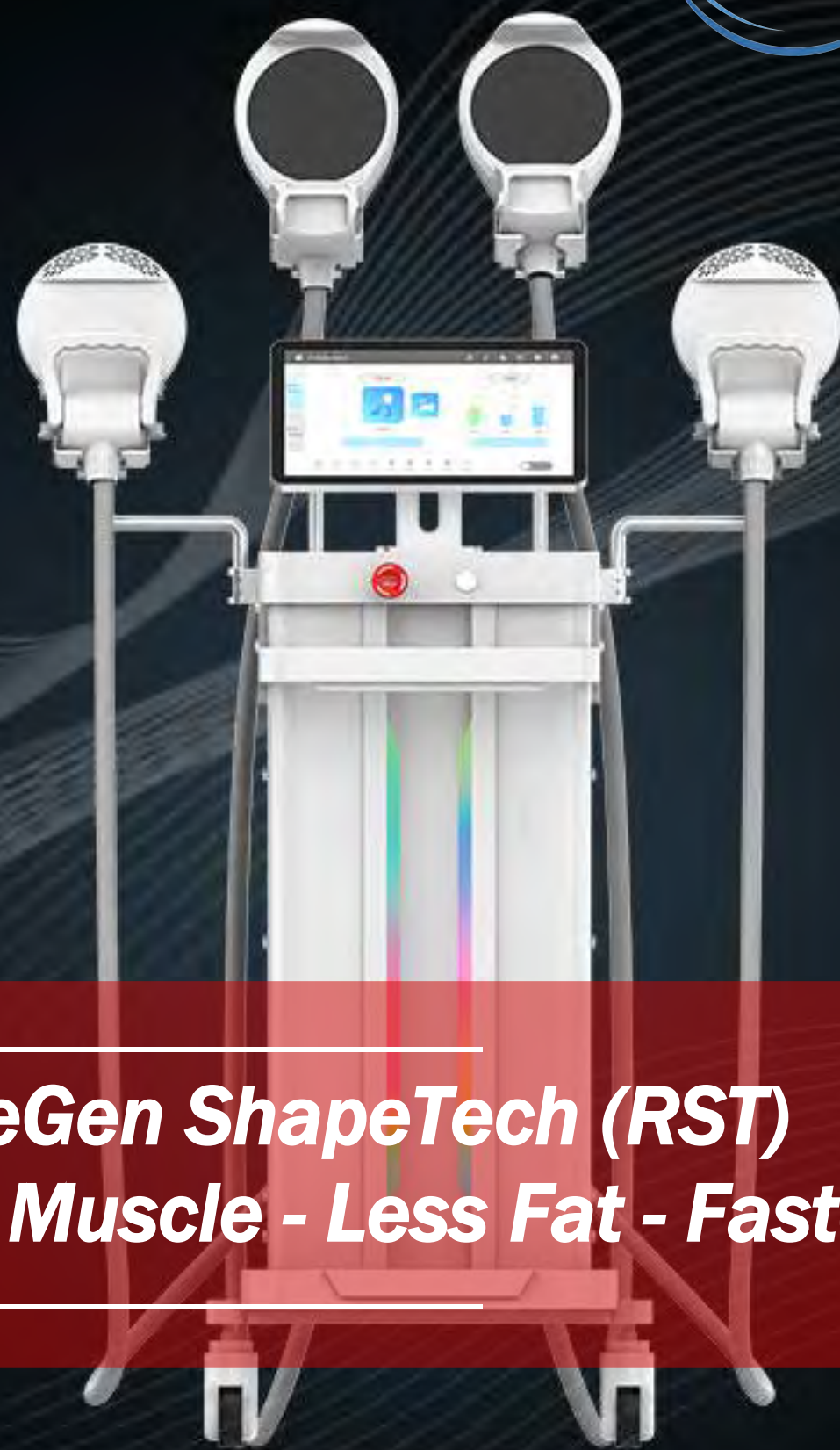
**2 in 1 Technology
RF & HIFEM**

**ANDROID SYSTEM
UPGRADE EMS+RF**



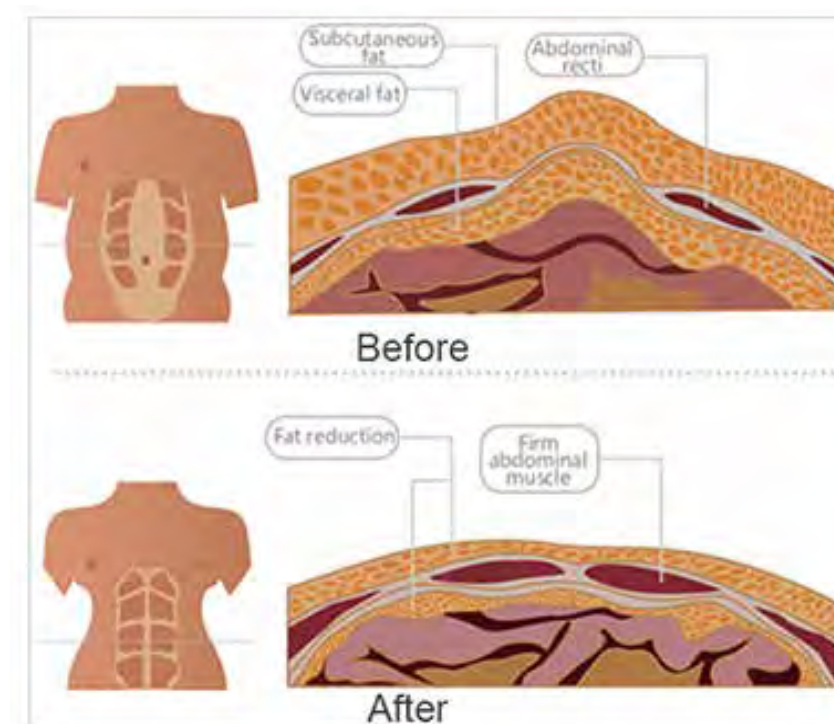
**Body Analyzer
Pelvic Cushion**





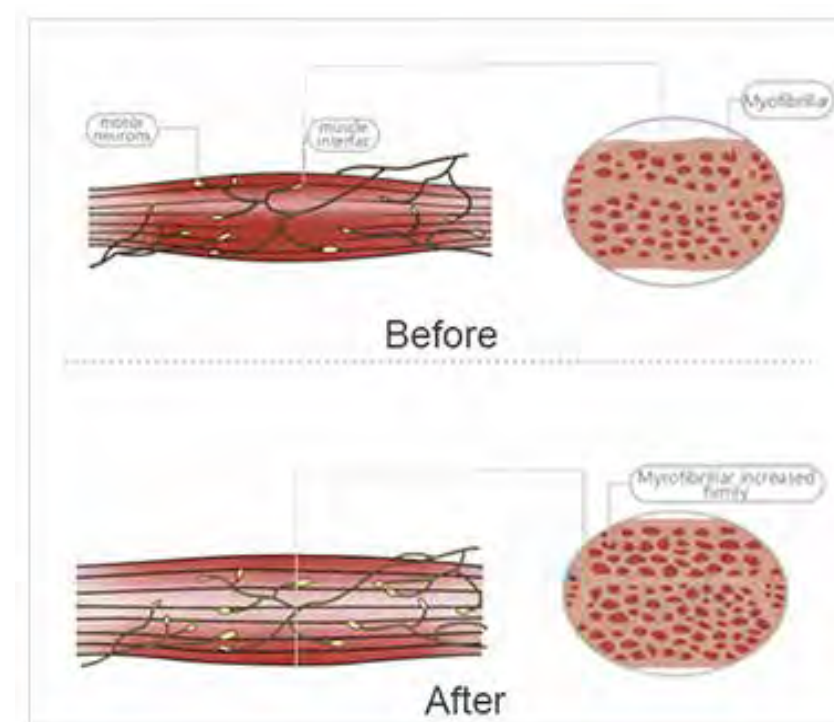
ReGen ShapeTech (RST)
More Muscle - Less Fat - Faster

HOW DOES IT WORK?



BURN FAT

The RF heat breaks down the fat cells. Then the fat cells are eliminated naturally by the body's waste removal systems and excreted. This removal process is accelerated by the high-intensity focused electromagnetic technology (HIFEM)



BUILD MUSCLE

ReGen RST induces supramaximal contractions with penetration depth up to 8cm of muscle tissue. This causes continuous expansion and contraction of muscles, increasing muscle density, volume and strength.

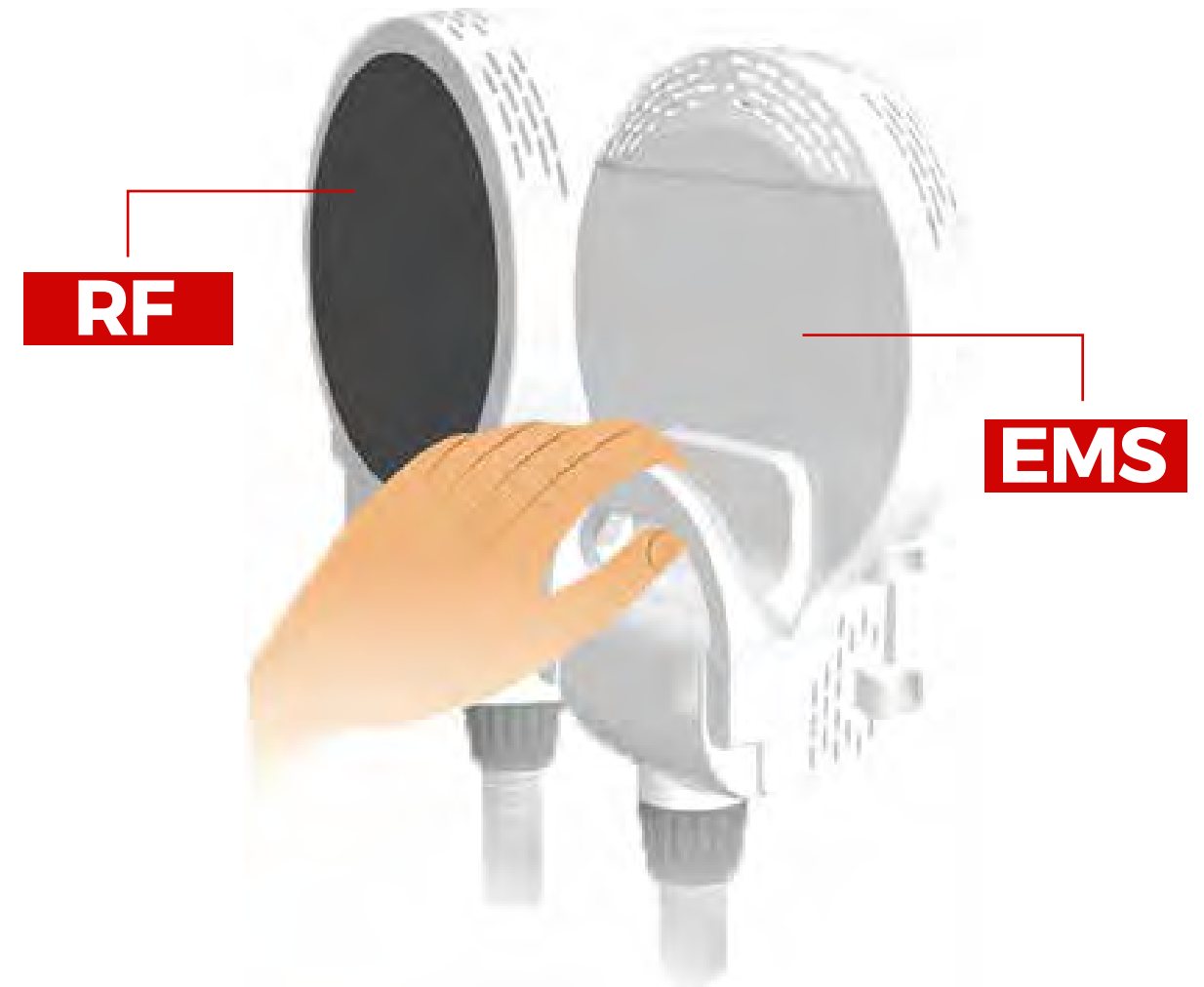
Muscle Building & Fat Burning

Handles for Different Treatment Areas



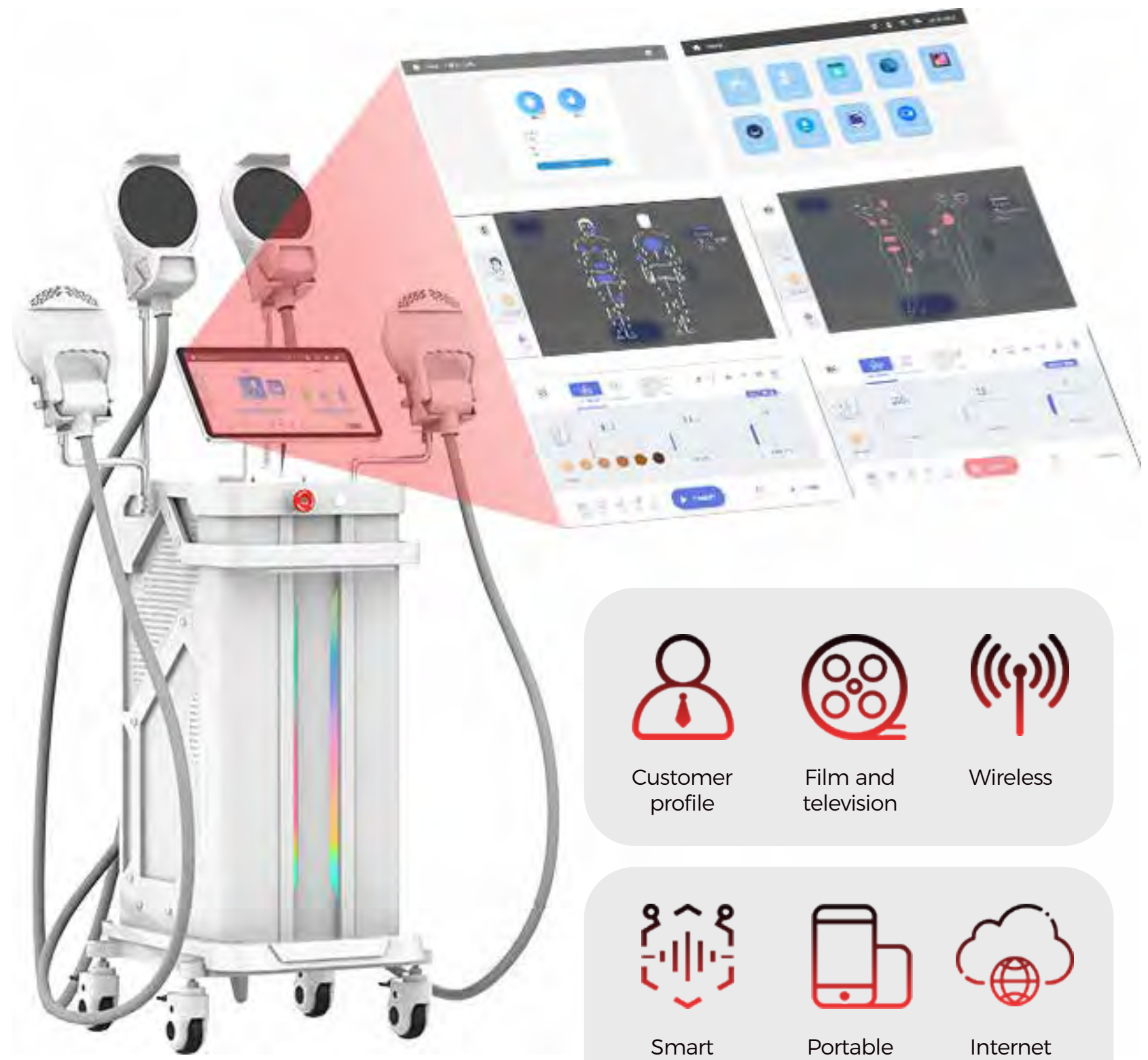
Exclusive Upgraded Handles

Handle for Arms/Legs

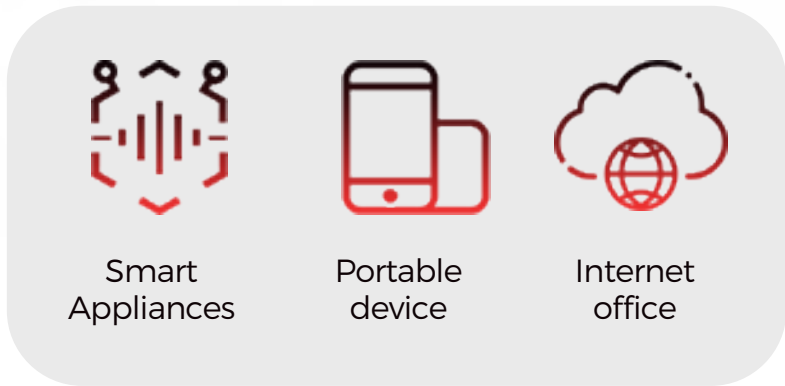
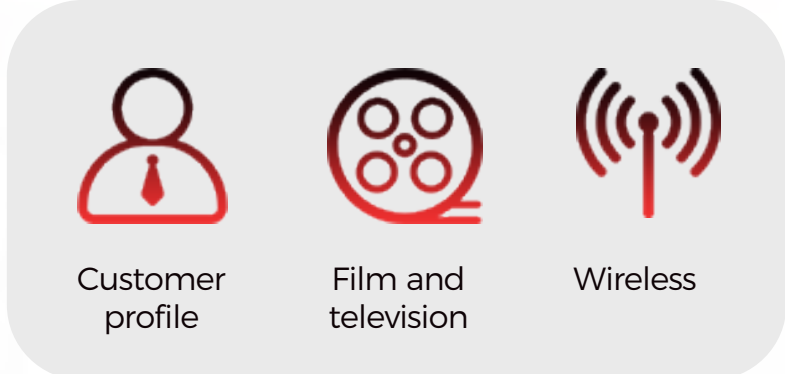
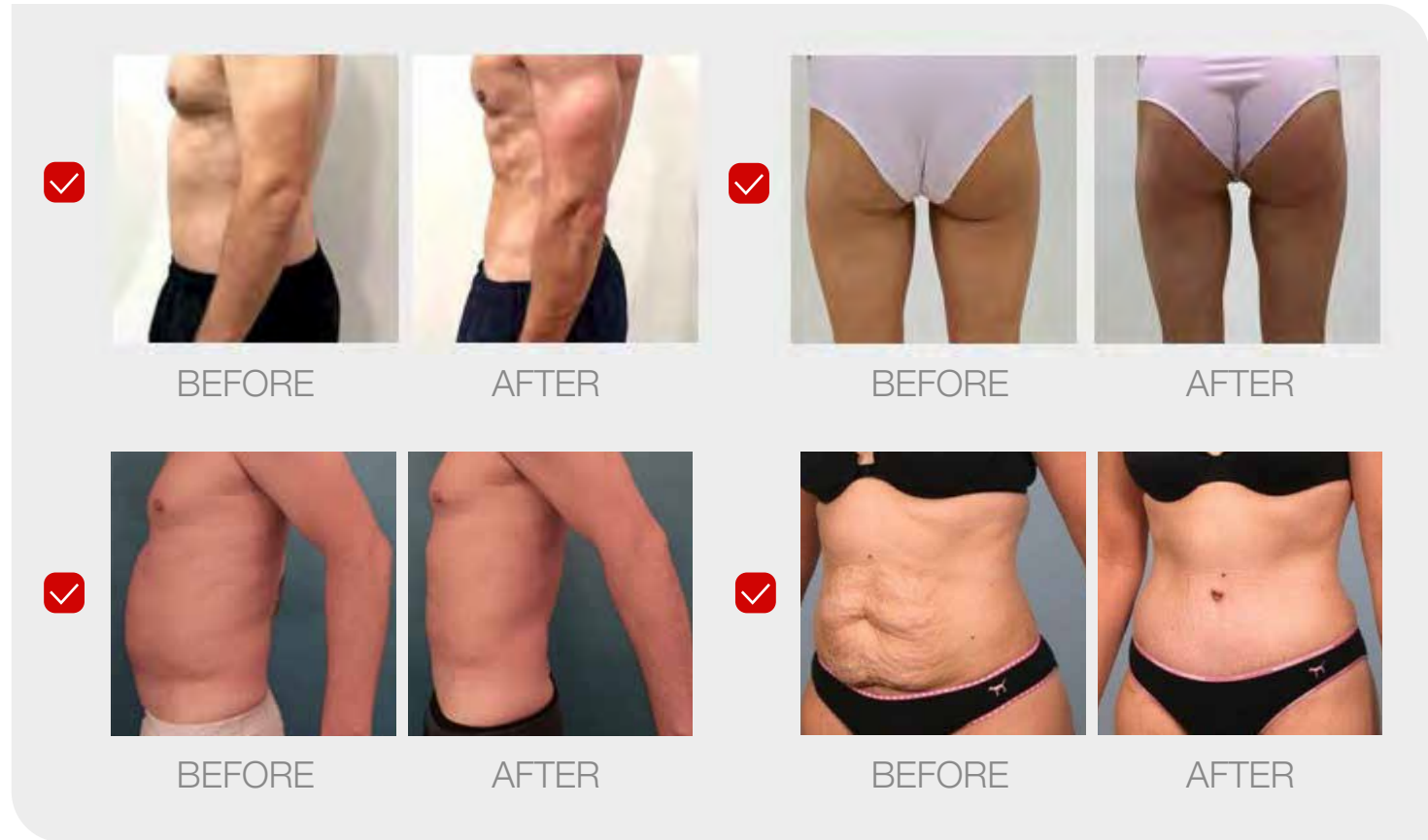




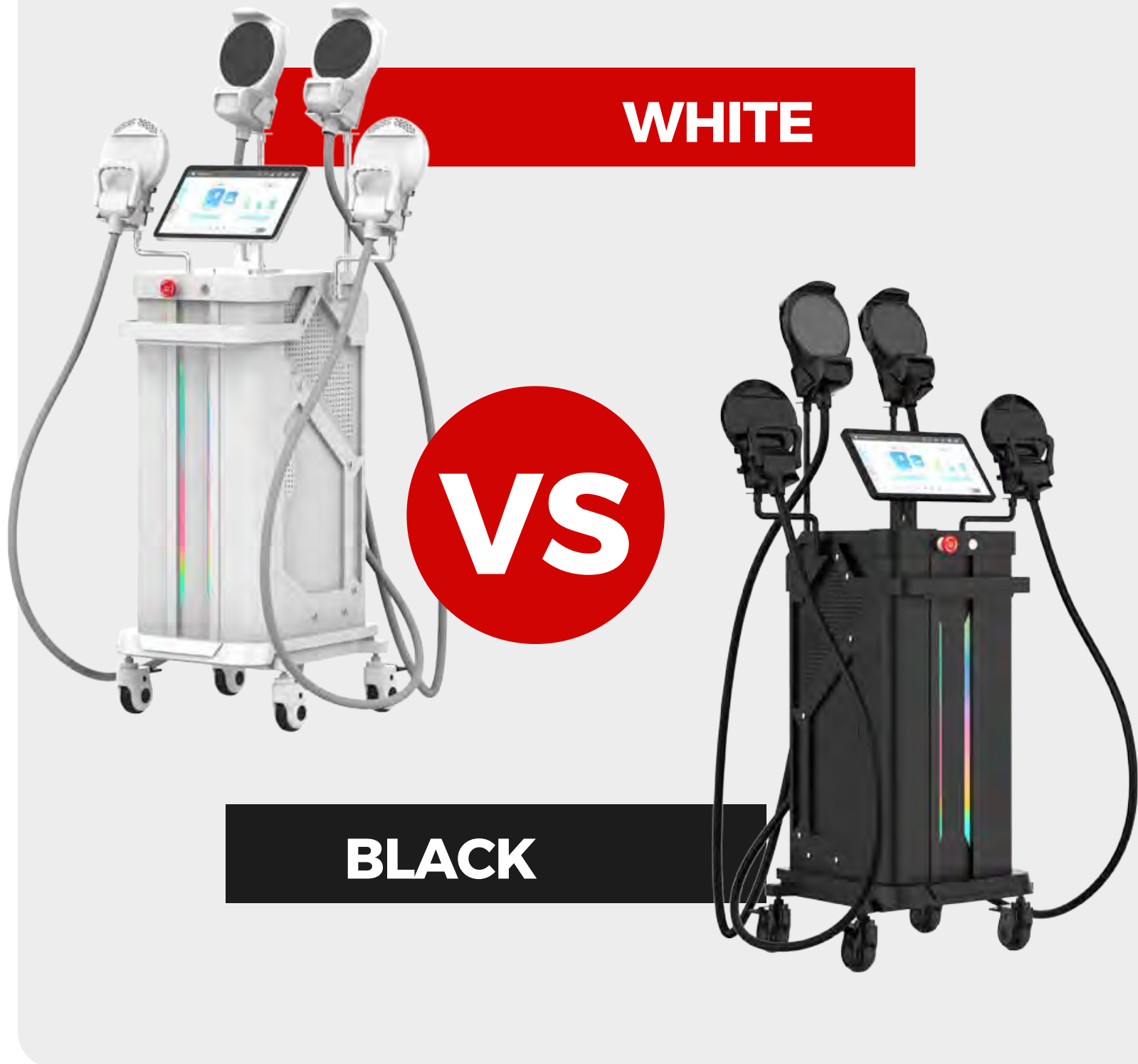
Android System w/ 15.6 inch screen & WiFi
Pelvic Cushion Attachment
Body Analyzer Attachment



Lasting And More Effective



Two Color Options



Body Analyzer

The Body Composition Analyzer connected with the machine by bluetooth can record and analyze the varying data of before and after treatment.

